

Insulation Hanger System

- + Provides up to 3 hour fire protection in curtain wall systems
- + Patented design
- + Saves time and money over traditional jobsite installation methods
- + Ideal for factory installing curtain wall insulation
- + Easy to install
- + Requires installation of fewer mechanical attachments
- + UL approved and listed

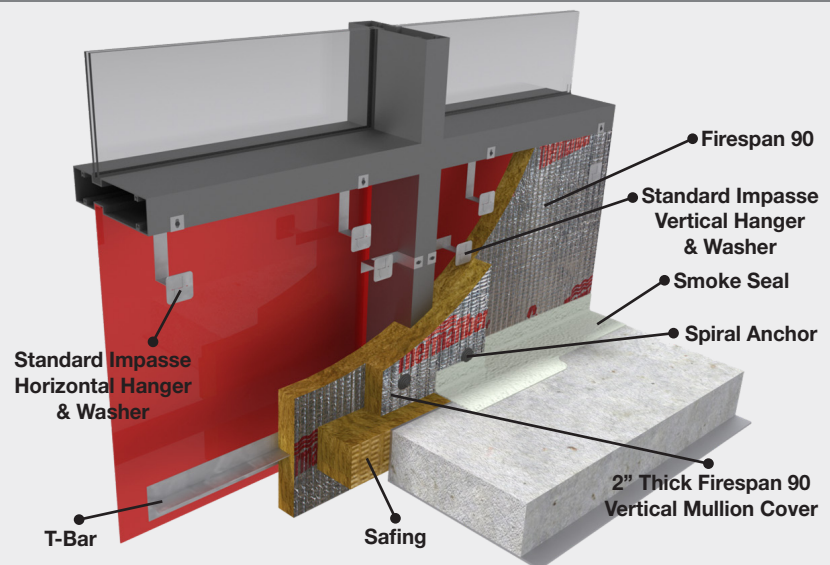
Insulation
Minimum
70%
Recycled
Content



Thermafiber® Impasse® System



The Impasse® system was used to install various Thermafiber® mineral wool insulations in the perimeter fire containment system at 353 N. Clark in Chicago. Thermafiber® insulation contributed to this building's LEED® Gold status.



Rendering of an Impasse® system with all of the necessary components.

Thermafiber® Impasse® System

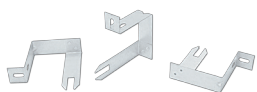




Description:

Thermafiber® IMPASSE® curtain wall insulation system is a patented design that streamlines the installation of curtain wall insulation by changing the order of traditional installation steps to fit a more logical progression and take full advantage of the fire protective, sound control, and vapor barrier properties of FireSpan® and Safing™ Insulation. Traditional curtain wall insulation systems call for installation of impaling pins on spandrel panels before installation of insulation. The insulation is then impaled onto the pins. The Impasse system is unique in that the hangers are inserted into the insulation before the insulation is installed into the panels. This technique saves time and money. The Impasse® system is tested and rated with UL® laboratories and provides up to 3 hours of fire protection.

Product Options:

- [Impasse Hangers](#)
- [Spiral Anchors](#)
- [Locking Washers](#)
- [FireSpan®](#)
- [Safing](#)

Standard Sizes:

| Product | | Sizes* |
|---|--|--------------------------------------|
| Impasse Vertical Hanger* |  | 2" – 5" in ½" increments |
| Impasse Horizontal Hanger* |  | 2"- 5" in ½" increments |
| Impasse Locking Washers |  | 1 size |
| 2 ¾" Spiral Anchor** (used w/ 1" thick mullion covers) |  | 500, 1000, or 2000 pieces per carton |
| 3 ¾" Spiral Anchor** (used w/ 2" thick mullion covers) |  | 500, 1000, or 2000 pieces per carton |

*Hanger Size = insulation thickness, custom sizes and designs are available upon request
 **Spiral Anchors should be at least 1 ¾" longer than the thickness of the mullion cover. Custom sizes available.

Perimeter Fire Containment Systems:

| UL® Approved Designs per ASTM E 2307 | | | | |
|--------------------------------------|-----------|-----------|-----------|-----------|
| CW-D-1005 | CW-D-1016 | CW-D-2041 | CW-D-2051 | CW-S-2058 |
| CW-D-1006 | CW-D-1017 | CW-D-2042 | CW-D-2052 | CW-S-2059 |
| CW-D-1007 | CW-D-2008 | CW-D-2043 | CW-D-2055 | CW-S-2060 |
| CW-D-1008 | CW-D-2009 | CW-D-2044 | CW-D-2056 | CW-S-2061 |
| CW-D-1009 | CW-D-2010 | CW-D-2045 | CW-D-2059 | CW-S-2062 |
| CW-D-1010 | CW-D-2036 | CW-D-2046 | CW-S-2001 | CW-S-2064 |
| CW-D-1012 | CW-D-2037 | CW-D-2047 | CW-S-2002 | |
| CW-D-1013 | CW-D-2038 | CW-D-2048 | CW-S-2003 | |
| CW-D-1014 | CW-D-2039 | CW-D-2049 | CW-S-2006 | |
| CW-D-1015 | CW-D-2040 | CW-D-2050 | CW-S-2008 | |

Thermafiber® Insolutions®:

Thermafiber offers industry leading technical and engineering assistance to architects, specifiers, and contractors. These services include CAD drawings, engineering judgments, LEED® Credit Information, product recommendations, and customized products. Contact our technical services department at 1-888-834-2371, or email technicalservice@owenscorning.com.

For Further Information:

For additional information about these or other Thermafiber products contact us at 1-888-834-2371 or visit our website www.thermafiber.com.

Notice:

THERMAFIBER, Inc. shall not be liable for incidental and consequential damages, directly or indirectly sustained, nor for any loss caused by application of these goods not in accordance with current printed instructions or for other than the intended use. THERMAFIBER liability is expressly limited to replacement of defective goods. Any claim shall be deemed waived unless made in writing within thirty (30) days from date it was or reasonably should have been discovered.

Submittal Approvals:

| | |
|------------|------|
| Job Name | |
| Contractor | Date |

